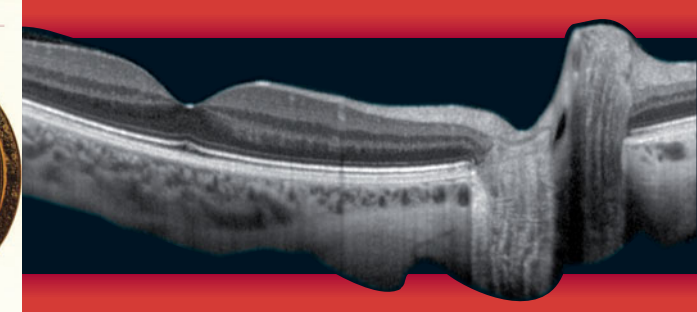


## Previous ISS

Oct	2012	Portofino, Italy
Oct	2011	Edinburgh, Scotland
Mar	2010	Shanghai, China
Feb	2009	Miami, USA
Feb	2008	Nice, France
Nov	2006	Kyoto, Japan
Sep	2005	Bonn, Germany
Sep	2004	Beijing, China
June	2003	San Diego, USA
Mar	2002	Portofino, Italy



## 11<sup>th</sup> International **SPECTRALIS**<sup>®</sup> Symposium (ISS)



**October 18-19, 2013**  
**Metropolitan Club · New York · USA**

### Course Director

K. Bailey Freund, USA

### Faculty

David Brown, USA

Balwantray Chauhan, Canada

Karl Csaky, USA

Francois Delori, USA

Jeffrey Heier, USA

Glenn J. Jaffe, USA

David Sarraf, USA

Richard F. Spaide, USA

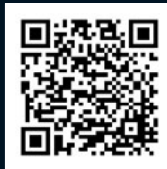
Giovanni Staurenghi, Italy

Sebastian Wolf, Switzerland

Lihteh Wu, Costa Rica

### Special Feature by:

Lawrence A. Yannuzzi, USA



**HEIDELBERG  
ENGINEERING**

Heidelberg Engineering GmbH · Tiergartenstr. 15 · 69121 Heidelberg · Germany  
Tel. +49 6221 6463-0 · Fax +49 6221 646362 · [www.HeidelbergEngineering.com](http://www.HeidelbergEngineering.com)

93496-002 INT.AE.13 © Heidelberg Engineering GmbH

**HEIDELBERG  
ENGINEERING**  
 **ACADEMY**

The 11<sup>th</sup> International SPECTRALIS Symposium (ISS) will take place **October 18-19, 2013** at the **Metropolitan Club** in **New York**, which is located across from Central Park on East 60<sup>th</sup> Street.

**Dr. K. Bailey Freund**, Ophthalmologist and Vitreo-Retinal Surgeon at Vitreous Retina Macula Consultants of New York, will head an outstanding faculty this year.



Over the years, Heidelberg Engineering Academy events have become known for their atmosphere of vibrant scientific exchange. In 2012 in Portofino (Italy), the ISS celebrated its tenth anniversary with 300 enthusiastic participants. This year as always, scientific program includes a broad spectrum of presentations from experienced users. Participants interested in the latest developments in ophthalmic imaging will be able to take home new ideas and concepts for clinical practice. Free papers are welcome.

**We look forward to welcoming you on October 18-19, 2013 in New York!**

**Venue: The Metropolitan Club • New York • USA**

### Preliminary Schedule

#### Friday, October 18, 2013

9:00 a.m. Registration & Welcome Coffee

10:00 a.m. - 5:30 p.m. Symposium

5:30 p.m. Welcome Reception

#### Saturday, October 19, 2013

9:00 a.m. - 5:00 p.m. Symposium

5:00 p.m. Farewell Reception

The final and detailed scientific program will arrive four weeks prior to the symposium.



*Please note that the Metropolitan Club has a strict dress code:*

*Gentlemen are required to wear jackets and ties at all times (turtlenecks and ascots are not acceptable). Appropriate attire for ladies is dresses, skirts, dressy pant suits and business pant suits. Jeans, sweats and T-shirts are not acceptable.*



### Retina Methods

- Advances in Multimodal Imaging
- MultiColor Imaging
- Ultra-Widefield Imaging
- Real-Time Angiography
- Transverse Section Analysis
- Imaging the Choroidal Anatomy
- Quantitative Fundus Autofluorescence
- Measuring Macular Pigment

### Retina Applications

- Refining the Diagnosis and Management of CNV in AMD
- Evaluating Intra- and Subretinal Fluid with Anti-VEGF Therapy
- The Clinical Significance of Pseudodrusen
- Biomarkers for Neovascular AMD Therapy
- Clinical Applications of Ultra-Widefield Imaging
- SD-OCT Anatomic Correlates to Visual Function
- Evaluating Focal Vitreomacular Adhesions
- Multilayered PEDs and Mechanisms of RPE Tear Formation
- Ischemia of the Superficial and Deep Capillary Plexus in AMN
- Choroidal Anatomy in Geographic Atrophy
- ICGA in Geographic Atrophy and Stargardt Disease
- Microcystic Macular Edema in Optic Nerve Pathology
- Multimodal Imaging of Macular Telangiectasia 2

### Glaucoma

- SD-OCT examination of the optic nerve head

### OCT Jeopardy: SPECTRALIS Mysteries

- A special interactive session with Lawrence A. Yannuzzi & K. Bailey Freund

### Online Registration

To register, scan the QR code or go online to: [www.heidelbergengineering.com/international/iss/](http://www.heidelbergengineering.com/international/iss/) Registration closes on **Oct 4, 2013**. For further registration details and travel information, see the enclosed registration information sheet.

