

 **katena**
DESIGNED FOR SIGHT®

INSTRUMENTS
BIOLOGICS
DEVICES



K4 剪刀等



About Us:

Katena is the largest independently owned American company dedicated exclusively to ophthalmic surgical instrumentation. Katena markets its products directly to customers in the United States and through a global network of distributors in more than 110 countries around the world.

Established 1975, Katena is committed to:

- Developing innovative instruments to support new surgical techniques and technological advances in the field of ophthalmology.
- Producing instruments of consistently excellent quality.
- Providing unexcelled service to its customers and strong support for its distributors worldwide.

お知らせ

このカタログの商品は、できる限り番号順に記載されています。目次は、カタログ番号の最初につく番号（例えばK1, K2・・・）によって、製品のグループを特定しています。

このカタログの写真は特に注記したものを除き実物大です。イラストは細部を示す為の拡大図です。

このカタログに記載されている手術用鋼製小物は、特に注記してあるもの以外はステンレススチール製です。

すべての仕様は、予告なしに変更される場合があります。

このカタログに使用されている写真、イラストおよびテキストは著作権で保護されており、カティーナ社の書面による同意なく複製できません。

Katena®, K-Sponge®, Performance™, Phaco-4™, Ultrakleen™, Designed for Sight™は、Katena Products社の登録商標です。

IOPatch, BioElevation, BioDome, Ambio5, keraSys and tarSys are registered trademarks of Innovative Ophthalmic Products, Inc. Ambio2 and AmbioDisk are trademarks of Innovative Ophthalmic Products, Inc. SutureGroove is a registered trademark of Advanced Meditech International – and is used with permission. Tutoplast is a registered trademark of Tutogen Medical – and is used with permission.

STAAR®, ICL™はカリフォルニア州モンロビアのSTAAR Surgical社の登録商標です。

IntraLase®はカリフォルニア州アーバインのIntraLase®社の登録商標です。



Scissors

カストロビエホ氏強角膜剪刀

小刃

Castroviejo

Corneoscleral Scissors
small blades

K4-1000 right (shown)

K4-1010 left



カストロビエホ氏強角膜剪刀

中刃

Castroviejo

Corneoscleral Scissors
medium blades

K4-1020 right (shown)

K4-1030 left



トラウトマン・カストロビエホ氏強角膜剪刀

小刃

Troutman-Castroviejo

Corneoscleral Scissors
with stop, small blades

K4-1200 right (shown)

K4-1210 left



Scissors

トラウトマン・カストロビエホ氏強角膜剪刀

中刃

Troutman-Castroviejo

Corneoscleral Scissors
with stop, medium blades

K4-1220 right

K4-1230 left (shown)



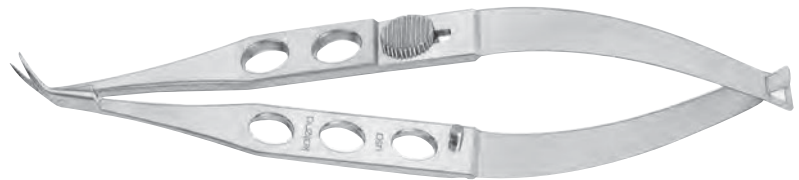
トラウトマン・カッチン氏角膜移植剪刀

Troutman-Katzin

Corneal Transplant Scissors
with stop
strong curve, small blades

K4-2000 right

K4-2010 left (shown)



リッチ氏マイクロ角膜移植剪刀

Rich

Corneal Transplant Scissors
extremely delicate,
strongly curved blades
*For trimming the recipient corneal
bed and donor button.*

*Can also be used for open sky
anterior capsulotomy.*

K4-2014 right

K4-2015 left (shown)



Scissors

テリー氏マイクロ角膜剪刀

Terry

Micro Corneal Scissors
round handle
for meticulous control

K4-2016 right (shown)

K4-2017 left



ホランド氏DALK剪刀

Holland

DALK Scissors
spatulated tip

K4-2018 right (shown)

K4-2019 left



カッチン氏角膜移植剪刀

Katzin

Corneal Transplant Scissors
strong curve, medium blades

K4-2020 right

K4-2030 left (shown)



Scissors

カストロビエホ氏角膜剪刀

Castroviejo

Universal Corneal Scissors
curved, blunt tips

K4-2200 small blades

K4-2220 medium blades

K4-2240 large blades

K4-2260 strongly curved
large blades



K4-2220



K4-2240



K4-2260



K4-2200

カストロビエホ氏角膜移植剪刀

Castroviejo

Keratoplasty Scissors
angled to side
blunt tips, medium blades

K4-2850



マクファーソン・ウェストコット氏結膜剪刀

McPherson-Westcott

Conjunctival Scissors
curved
blunt tips, small blades

K4-3000



Scissors

サーキシアン・ウェストコット氏剪刀

Sarkisian-Westcott

Scissors

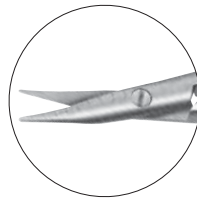
small blades

with nine 1mm landmarks

laser etched on one blade

For intra-operative cutting and measuring with a single instrument.

K4-3002



ウェストコット氏切臍剪刀

中刃

Westcott

Tenotomy Scissors

blunt tips, medium blades

curved

K4-3004



ウェストコット氏切臍剪刀

スタンダード刃

Westcott

Tenotomy Scissors

blunt tips, standard blades

curved

K4-3100 right (shown)

K4-3110 left



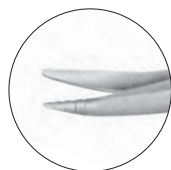
Scissors

チボー氏涙点剪刀

Tibolt

Punctal Scissors
one conically shaped blade
with micro grooves and
textured surface
For simple "Two-snip
Punctoplasty".

K4-3130



ウェストコット氏剪刀 ミニ

Mini Westcott

Tenotomy Scissors
4mm long curved blades
blunt tips

K4-3200



マクファーソン・ウェストコット氏截除剪刀

McPherson-Westcott

Stitch Scissors
very sharp pointed tips
small blades
curved

K4-4000



Scissors

ウェストコット氏截除剪刀

Westcott

Stitch Scissors
very sharp pointed tips
standard blades
curved

K4-4100

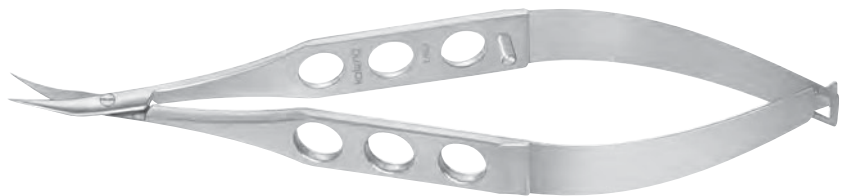


ジャフィー氏截除剪刀

Jaffe

Stitch Scissors
very sharp pointed tips
medium blades
curved

K4-4150



カティーナマイクロ結紮刃

縫合糸結紮・カッピング用

Katena

Micro Tying Scissors
For tying and cutting
9-0 to 11-0 sutures.
2.75mm long tying platform
*Not to be used as a
needle driver.*

K4-4200



side view



Scissors

虹彩剪刀

Iris

Scissors
sharp tips, small blades

K4-4400 straight

K4-4410 curved



K4-4410



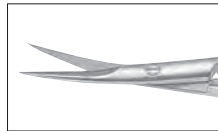
ファイン氏截除剪刀

Fine

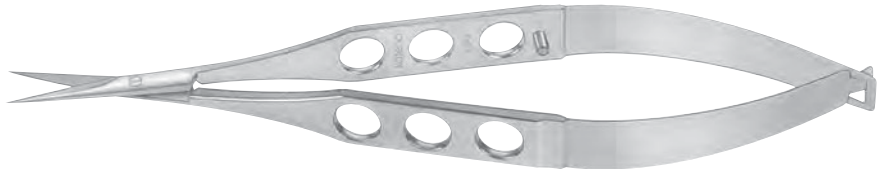
Stitch Scissors
sharp tips, medium blades

K4-4500 straight

K4-4510 curved



K4-4510



バラック氏虹彩剪刀

Barraquer

Iris Scissors
blunt tips, 7mm long blades

K4-4900



Capsulotomy Scissors

切囊剪刀

Capsulotomy Scissors

バンナス氏切囊剪刀

Vannas

5mm long blades, sharp tips

K4-5000 straight

K4-5010 curved

K4-5020 angled forward

K4-5030 angled to side

ギルス・バンナス氏切囊剪刀

Gills-Vannas

7mm long blades, sharp tips

K4-5050 straight

K4-5060 curved

K4-5070 angled forward

ホランド氏DALK剪刀

Holland DALK Scissors

4.5mm angled blades

K4-5075 blunted tips

マクファーソン・バンナス氏虹彩剪刀

McPherson-Vannas

8mm long blades, sharp tips

K4-5100 curved



K4-5000



K4-5010



K4-5020



K4-5030



K4-5050



K4-5060



K4-5070



K4-5075



K4-5100

切囊剪刀

Capsulotomy Scissors

Katena-Vannas

7mm extra thin long blades, sharp tips

カティーナ・バンナス氏切囊剪刀

K4-5110 Katena-Vannas, straight

K4-5111 Katena-Vannas, curved

ギルス・バンナス氏切囊剪刀

K4-5112 Gills-Vannas, angled forward

10mm extra thin long blades, sharp tips

カティーナ・バンナス氏切囊剪刀

K4-5120 Katena-Vannas, straight

K4-5121 Katena-Vannas, curved

スターン・ギルス氏切囊剪刀

K4-5122 Stern-Gills, angled forward

ウリベ・スターン氏切囊剪刀

K4-5123 Uribe-Stern, curved,

angled, forward

10mm long angled blades, curved tips

ギルス氏切囊剪刀

K4-5125 Gills, sharp points

ウトホフ・ギルス氏切囊剪刀

K4-5126 Uthoff-Gills, blunt points



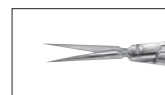
K4-5110



K4-5111



K4-5112



K4-5120



K4-5121



K4-5122



K4-5123



K4-5125



K4-5126

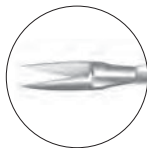
Scissors

硝子体剪刀

20G

Vitreotomy Scissors

20 gauge shank
Stainless steel construction with serrated plastic handle. Autoclavable.



Scissors
horizontal opening
straight
K4-5200
水平
直



Scissors
horizontal opening
angled 30°
K4-5210
水平
曲 30°



Scissors vertical
opening angled
60°
K4-5240
垂直
曲 60°



Scissors vertical
opening angled
80°
K4-5250
垂直
曲 80°



硝子体・網膜用剪刀

チタニウム製スクウィーズハンドル

Katena

“Squeeze Handle” Scissors
These “squeeze handle” instruments feature titanium handles to reduce overall weight, and front ends of hardened stainless steel for secure cutting.



Scissors
horizontal, straight
K4-5300 20ga.
水平
直



Scissors
horizontal, curved
K4-5310 20ga.
K4-5423 23ga.
K4-5425 25ga.
水平、反



Scissors
horizontal, angled 45°
K4-5320 20ga.
水平
曲 45°



Scissors
vertical, 40°
K4-5330 20ga.
垂直、40°



Scissors
vertical
K4-5433 23ga.
垂直



Scissors
vertical, 80°
K4-5340 20ga.
垂直、80°

Scissors

アリオ氏MICS剪刀

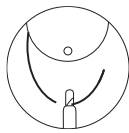
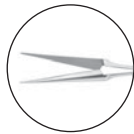
Alio

MICS Scissors

23 gauge curved shaft with
horizontal micro blades

For cutting delicate membranes.

K4-5351



シメカ氏IOLループ切断剪刀

Scimeca

Lens Loop Amputator

*For cutting polypropylene
or PMMA lens haptics*

*in the anterior or posterior
chamber.*

K4-5550 with guard

IOL Cutters

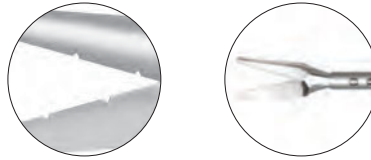
ドネンフェルド氏マイクロIOLカッター

Donnenfeld

Micro IOL Cutter
4mm long blades
micro notches in
blades for traction
For cutting soft IOLs
through a 1.5mm incision.

K4-5560

Used with K5-7570



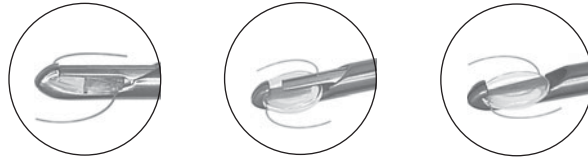
ストルテ氏ソフトIOLカッター

チタニウム製

Stolte

IOL Cutter
titanium
slotted cover to retain
soft IOL during cutting
process
For cutting soft IOLs.

K4-5565



ソフトIOLカッター

Katena

IOL Cutter
6mm long serrated blades
For cutting soft IOLs.

K4-5571

